

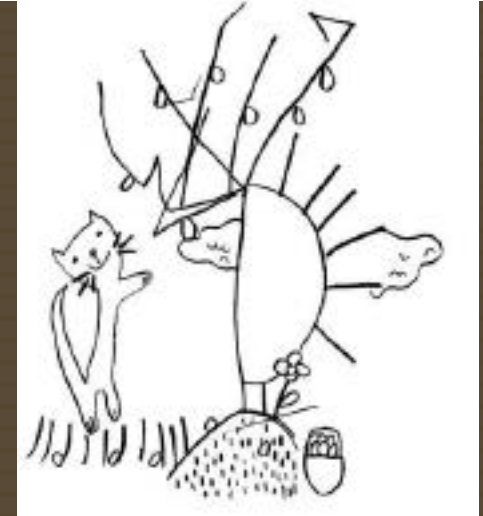
LINE



Line

One dimensional

- Uses Outlines
- Used to divide spaces
- Decoration
- Describe volume



Line

Single straight line:

convey different mood and emotion
anger, calm, fear, grace, excitement

Do this by varying size, shape, position,
direction & density



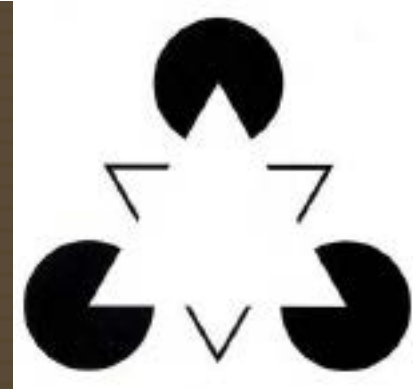
Line

Filling in the gaps



Line

Implied line



Line

Line Direction

Horizontal: quiet, repose

Vertical: potential to action

Horizontal & vertical: grid

Diagonal: dynamic, tension



Line

Line quality

Drawing instrument
(pencil, pen, charcoal, brush...)
Ground (paper, canvas...)
Support (board, paper...)



Line

Lines as outlines describing shape

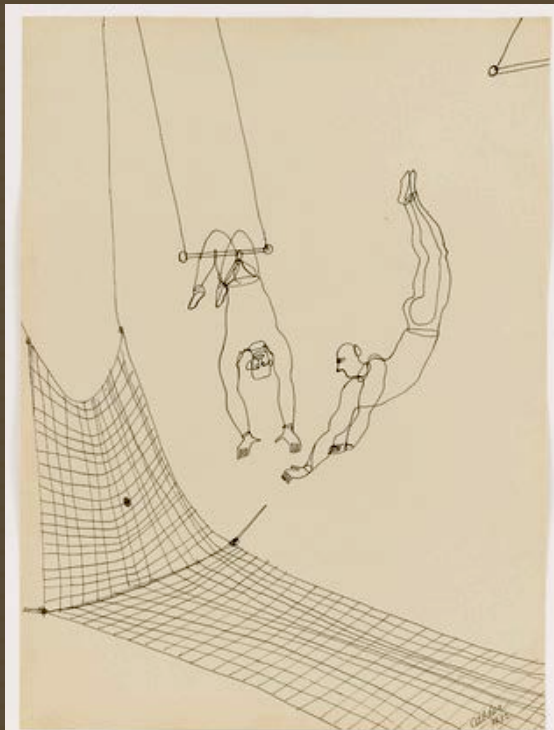
- Boundaries between light and dark
- Can be filled in with color



Line

Contour line: follows edges of an object
- Like a wireframe in 3D

Impersonal line: uniform weight



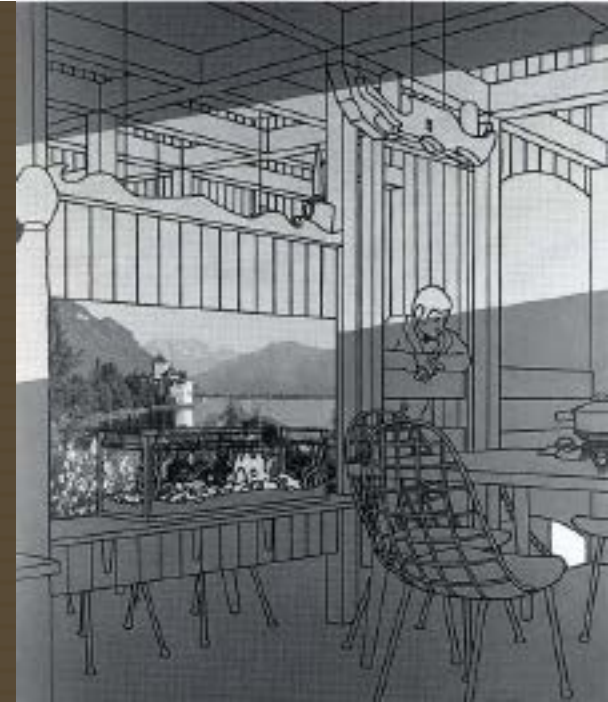
Line

Gesture: expressive



Line

Precise lines compared to:
Imprecise and hesitant with no clear outlines

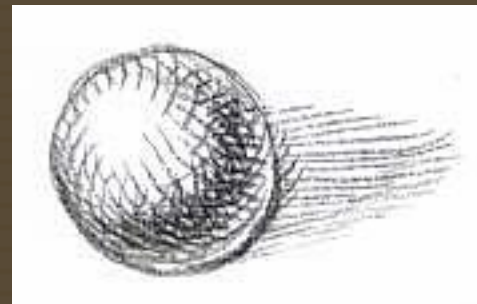


Line

Lines as Value creating 3D form

cross-hatching:

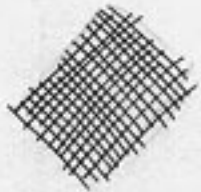
quantity, thickness and spacing of the lines will affect the brightness of the overall image, and emphasize forms creating the illusion of volume



CROSS HATCHING:



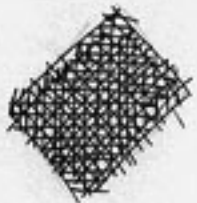
$\frac{1}{4}$ Hatching



$\frac{1}{2}$ Hatching



$\frac{3}{4}$ Hatching



Cross Hatching

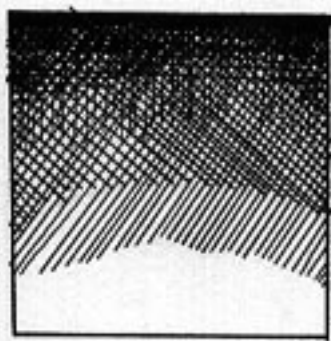


Fig. 1



Fig. 3

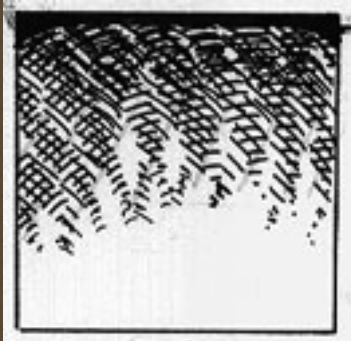
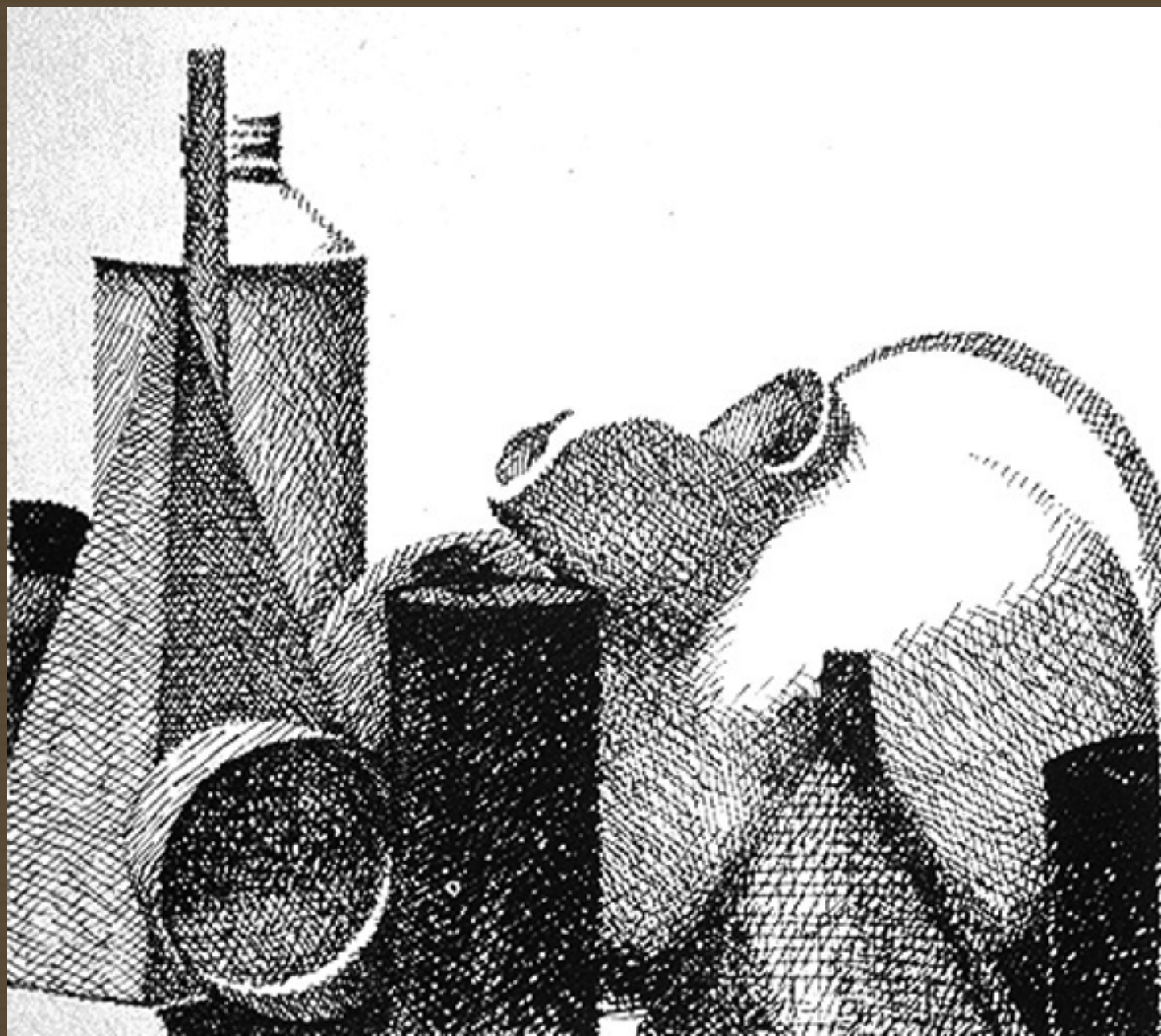
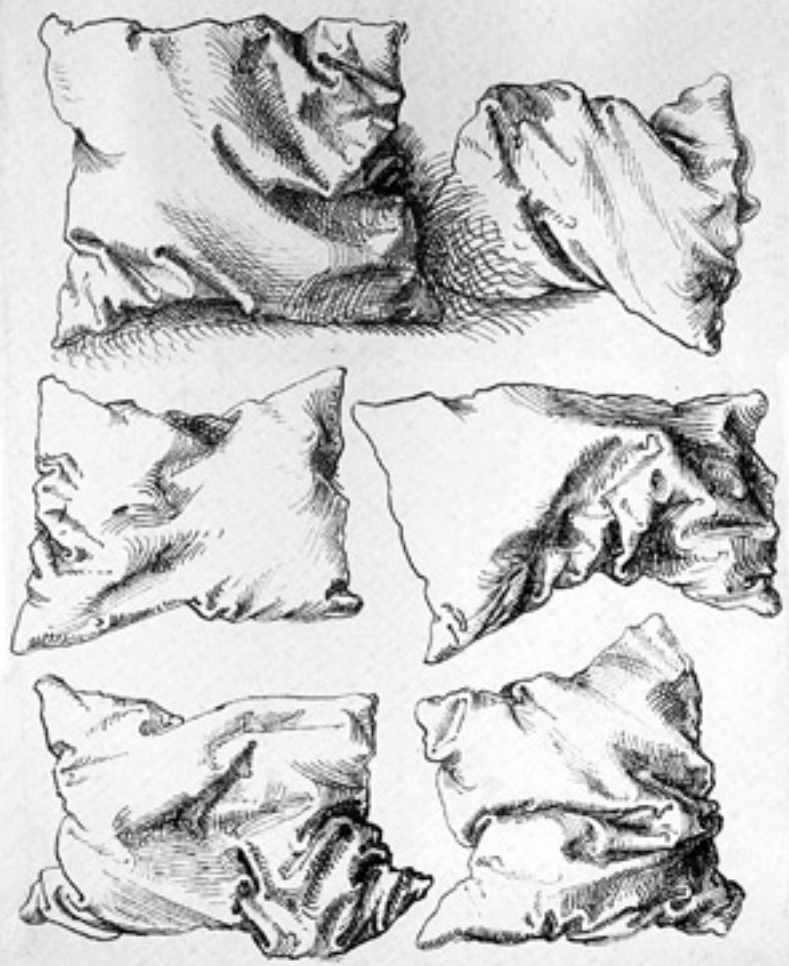


Fig. 2



149

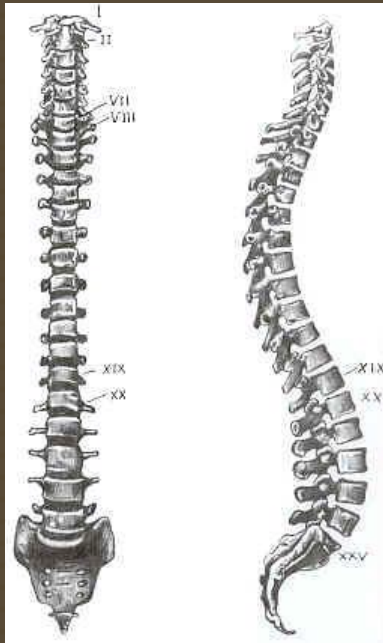


Line

Implied lines:

visible but not drawn

- vertebrae
- letters



Line

Implied and Imaginary lines:
lost and found edges

