

Depth

- Feeling of three dimensionality on a 2D surface
- We see space by looking carefully at the surface

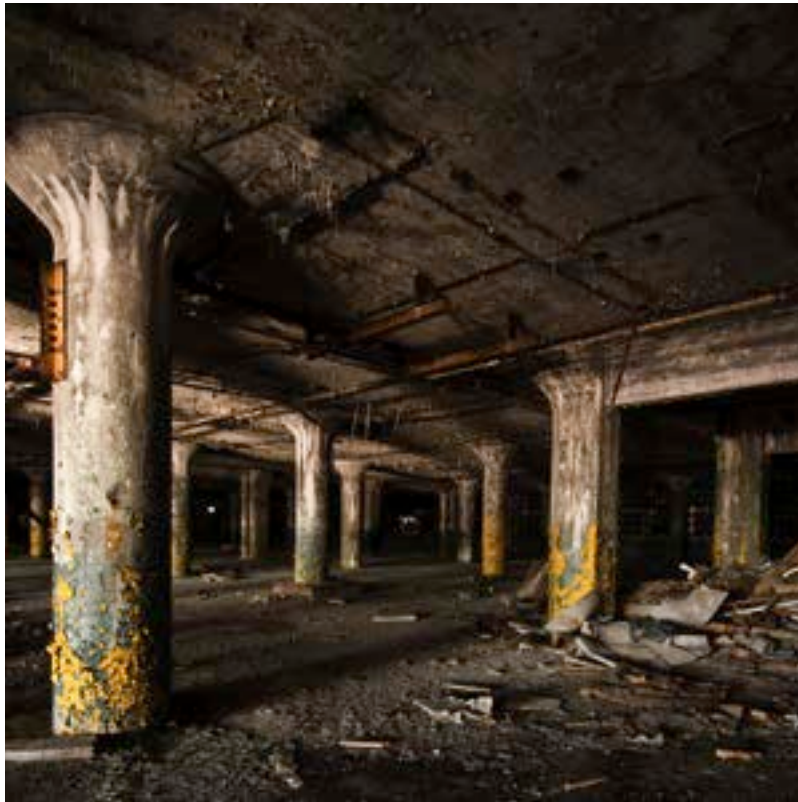


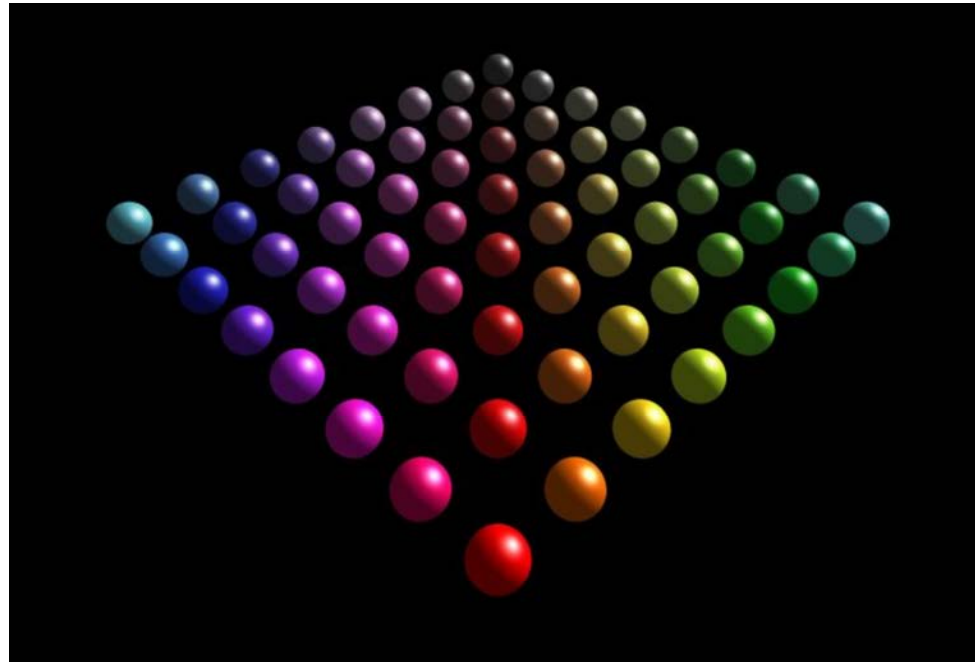
Figure and Ground

- Convex shapes with boundaries that curve outward tend to be seen as figure
- Concave shapes with boundaries that curve inward: ground
- Texture: lack of texture creates visual emptiness of ground
- Value and color: more contrast > stronger separation of figure and ground



Depth clues: gradient

- Gradient is any gradual, orderly change in some visual quality
 - Change from dark to light
 - Smooth swelling and tapering of an oval
 - Change from large forms to medium to small ones

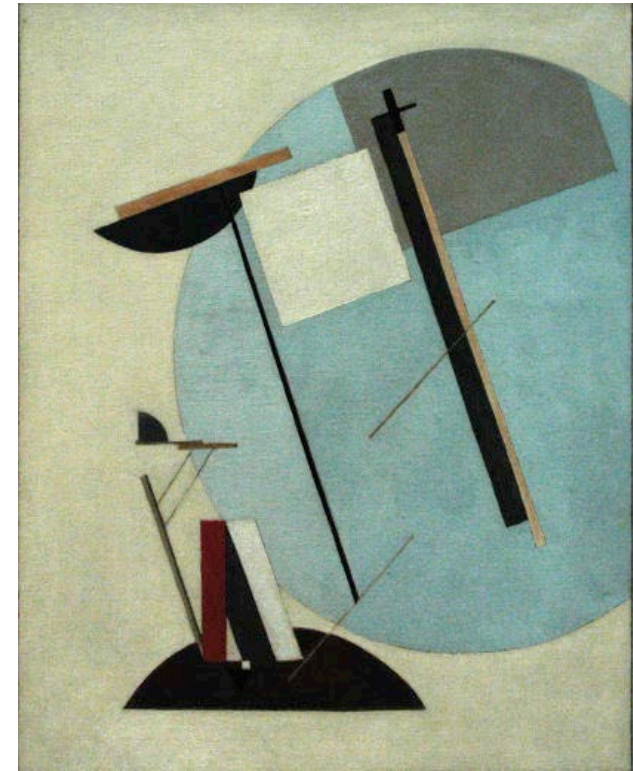


- Effective at creating pictorial space
 - diminishing size of figures (vanishing point)
 - Must happen at even steps
 - Sufficient number of steps/transitions



Overlap

- Illusion of one shape seeming to block our view of another object
- Helps us interpret something that would be otherwise ambiguous
- Shapes can read as holes



Size change

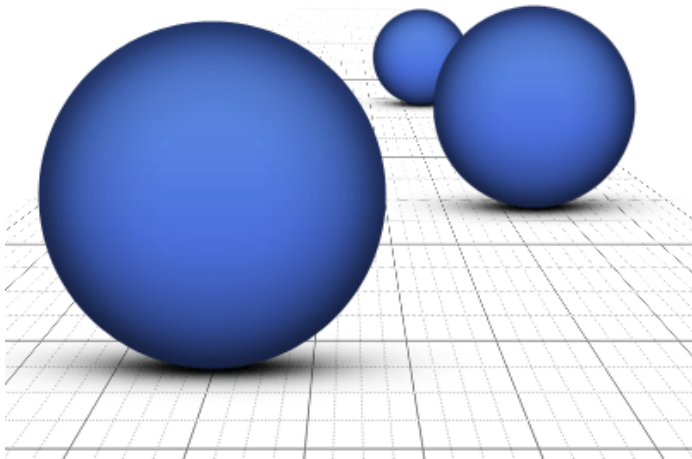
- Size change alone creates depth
- If in real life the objects spaced regularly, like a row of trees > more dramatic and apparent



The Avenue, Meinhardt Hobbema

Vertical location

- Foreground is in the lower part
- The forms in distance appear higher up
- Disrupt and reverse expected relationships



Space moving in

Frontal recession

Series of overlapping layers that are parallel to the front of the stage

Flat

Each layer takes the viewer step into the depth, echoes 2D surface

Quiet order

Letterforms, block of type



Diagonal recession

Planes arranged to move into space at an angle to the front plane

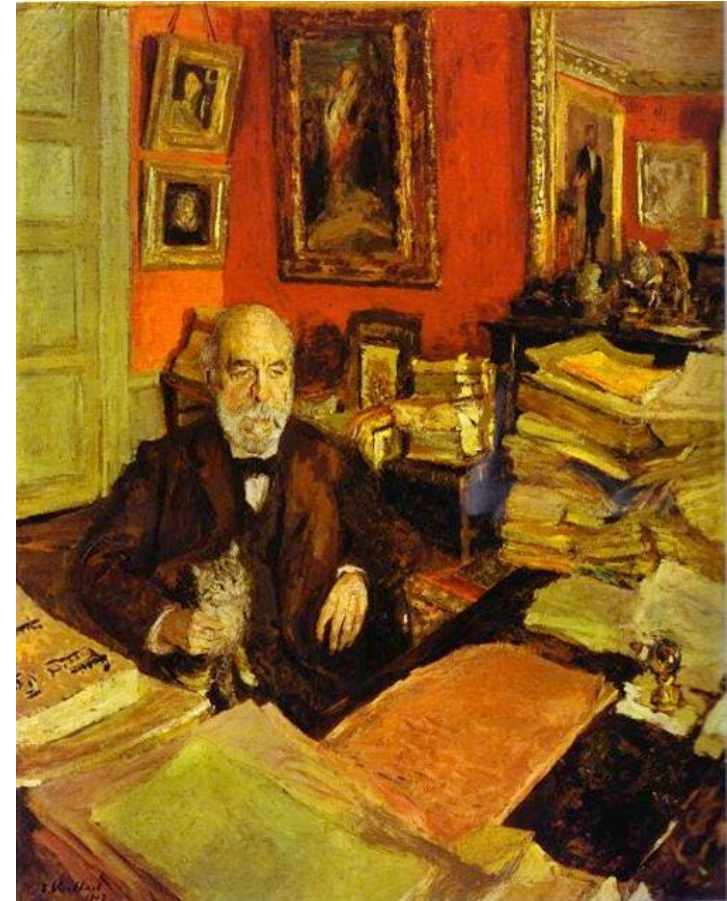
More visual motion

Less enclosed

Drama and movement to ordinary objects

Zoom from foreground to background

Quicker moving space



Space moving out

Space moving out of the picture plane

Viewer in the picture

Use an object to establish shallow depth (like a ledge) and then make objects appear to extend past it



Open space

Space that seems to continue beyond the confines of the page

Suggest small slice of a larger whole

Edges of the page de-emphasised and elements lead the eye off the page

Space dissolving into distance and distance dissolves into light



Empty space

Valuable

Requires sense of interval
and proportion

Volume filled

