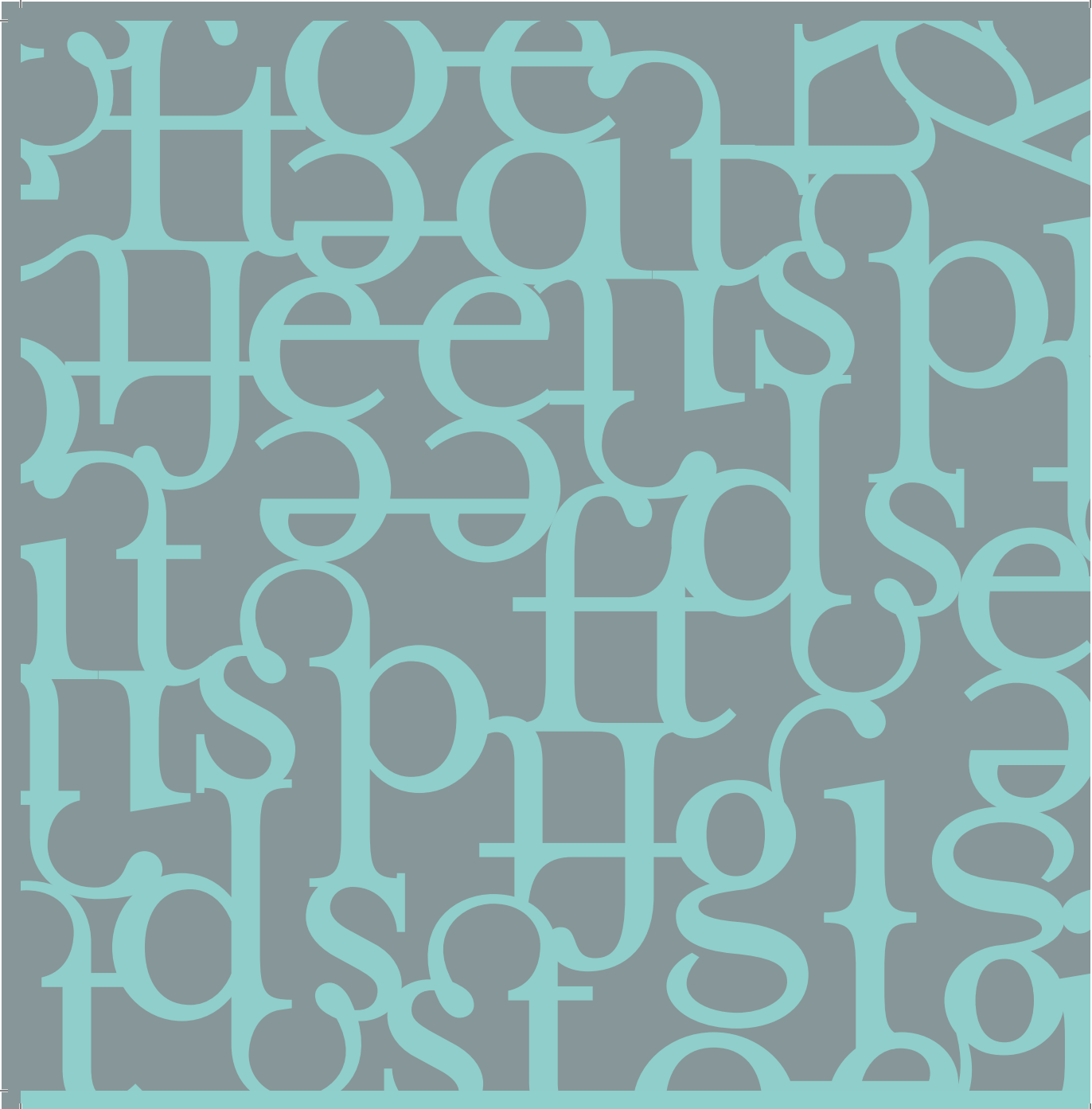


If you are a dreamer, come in,
If you are a dreamer, a wisher, a liar,
A hope-er, a pray-er, a magic-bean-buyer...
If you're a pretender, come sit by my fire
For we have some flax-golden tales to spin.

Come in!

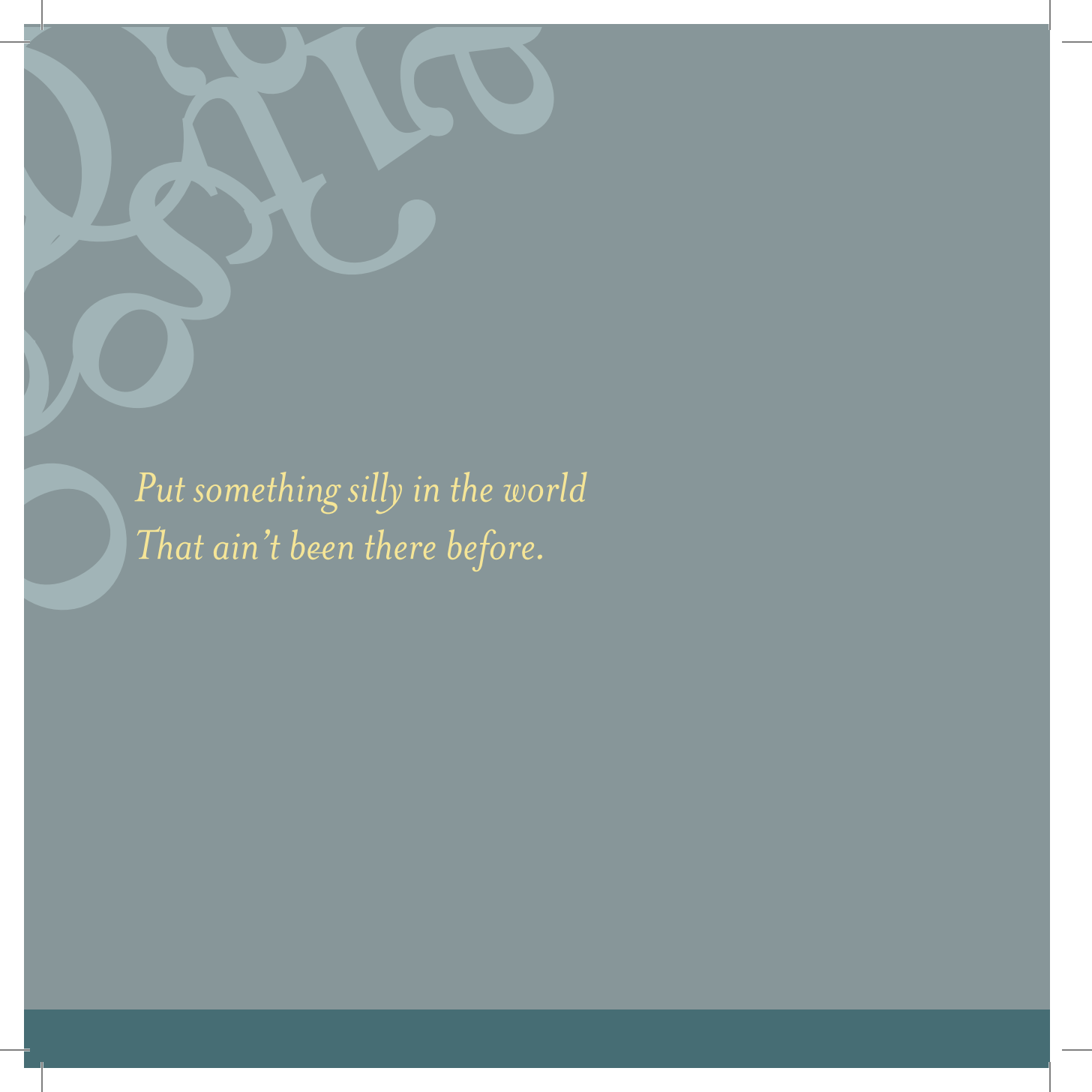
Come in!



Sharon Su, Editor and Designer
Typography I
Fall 2011

Quotes and Poems by Shel Silverstein
Historical information from Wikipedia

type specimen



*Put something silly in the world
That ain't been there before.*

Table of Contents

History	6
Mrs Eaves	8
<i>Roman</i>	8
<i>Italic</i>	10
<i>Bold</i>	12
<i>Small Caps & Petite Caps</i>	14
Ligatures and Symbols	16
<i>Ligatures</i>	17
<i>Symbols</i>	20
Colophon	23

Mrs Eaves is a transitional serif typeface designed by Zuzana Licko in 1996, and licensed by Emigre. Mrs Eaves is a revival of the types of English printer and punchcutter John Baskerville, and is related to contemporary Baskerville typefaces.

Mrs Eaves Roman, 12 point

I'm a kid.

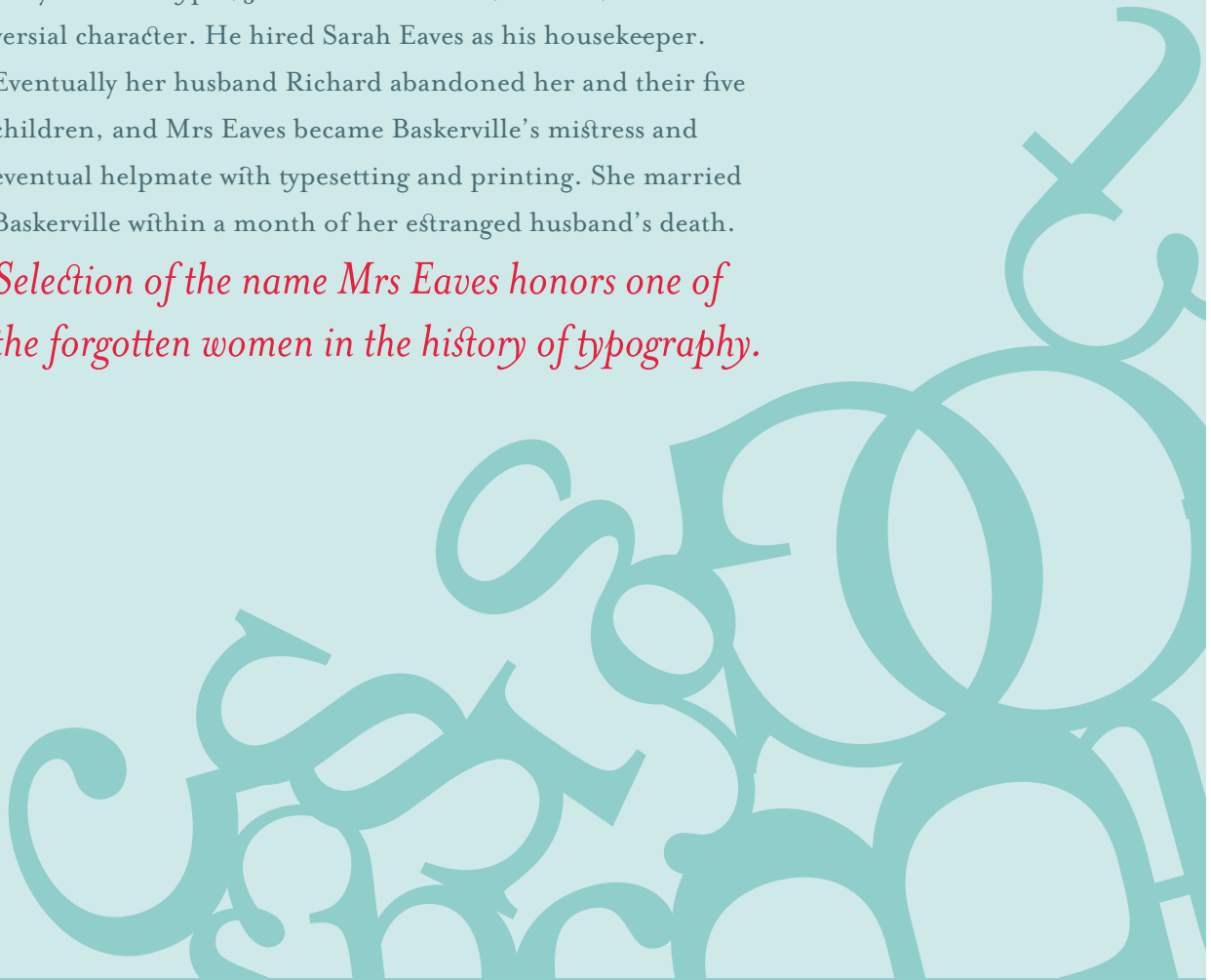
Mrs Eaves Roman, 48 point

I'm a kid.

Baskerville Old Face Roman, 48 point

Licko's selection of the name Mrs Eaves reveals an interesting story. Like his types, John Baskerville was, himself, a controversial character. He hired Sarah Eaves as his housekeeper. Eventually her husband Richard abandoned her and their five children, and Mrs Eaves became Baskerville's mistress and eventual helpmate with typesetting and printing. She married Baskerville within a month of her estranged husband's death.

Selection of the name Mrs Eaves honors one of the forgotten women in the history of typography.



Mrs Eaves Roman; 36 point

A B C D E F G H I J K L M
N O P Q R S T U V W X Y Z
a b c d e f g h i j k l m
n o p q r s t u v w x y z
1 2 3 4 5 6 7 8 9 0

Oh, if you're a bird, be an
early bird

And catch the **WORM** for your breakfast plate.

If you're a bird, be an early bird—

But if you're a worm, *sleep late.*

Mrs Eaves Italic; 40 point

A B C D E F G H I J K L M

N O P Q R S T U V W X Y Z

a b c d e f g h i j k l m

n o p q r s t u v w x y z

1 2 3 4 5 6 7 8 9 0

You don't have to shoot me,
says the young lion.

*I will be your rug and I will lie in front
of your fireplace and*

I won't move a muscle

*and you can sit on me and toast all the
marshmallows you want.*

I love marshmallows.

Mrs Eaves Bold; 36 point

A B C D E F G H I J K L M
N O P Q R S T U V W X Y Z
a b c d e f g h i j k l m
n o p q r s t u v w x y z
1 2 3 4 5 6 7 8 9 0

I asked the Zebra,

Are you **black** with **white** stripes?

Or **white** with **black** stripes?

And the Zebra asked me,

Are you **good** with **bad** habits?

Or are you **bad** with **good** habits?

Are you NOISY WITH QUIET TIMES?

Or are you *quiet with noisy times?*

Are you **happy** with **some sad days?**

Or are you sad with some happy days?

Are you **neat** with **some sloppy ways?**

Or are you **sloppy** with **some neat ways?**

And on and on and on and on and on and on he went.

I'll never ask a zebra about stripes...again.

I AM WRITING THESE POEMS FROM INSIDE A LION...

Small Cap; 21 point

Mrs Eaves Small Caps; 36 point

A B C D E F G H I J K L M

N O P Q R S T U V W X Y Z

A B C D E F G H I J K L M

N O P Q R S T U V W X Y Z

1 2 3 4 5 6 7 8 9 0

A B C D E F G H I J K L M
N O P Q R S T U V W X Y Z

A B C D E F G H I J K L M
N O P Q R S T U V W X Y Z

1 2 3 4 5 6 7 8 9 0

Mrs Eaves Petite Caps; 36 point

*Mrs Eaves Petite Caps is the same as Small Caps,
only with smaller lowercase type and taller numbers.*

IT'S ALL THE SAME TO THE CLAM.

Petite Cap; 21 point



*Ligatures
& Symbols*

What sets Mrs Eaves apart from other serif typefaces is that she features beautifully designed ligatures and symbols.

Mrs Eaves Just Lig; 36 point

TE Æ Œ V AA MB Œ MD ME
FF Œ HE FI UB NK FL LA NT
Œ MP E R UD TT UP VA TW
UL TY UR Th Æ Œ

ſs ſs fi ff b ffi ffh ffj cky ffl ffr
fft ffy æ æ fb ct fy ee ff gi fh
it fj ky fl gg gy œ sp ggy fr st ft
ip py tw tt ty tty œ ſs ſs æ fi fl

There is a place where the sidewalk ends,

And before the **street begins**,

And there the grass grows **soft** and **white**,

And there the sun burns crimson bright,

And there the moon-bird **rests**

from his **flight**

To cool in the peppermint wind.

Mrs Eaves Roman; 36 point

Mrs Eaves contains a number of elegantly designed symbols, fractions, and glyphs. Even the most pedantic of content is transformed by Mrs Eaves' character.

	$\frac{1}{2}$!	{
	$\frac{1}{3}$!	}
	$\frac{2}{3}$	@	[
	$\frac{1}{4}$	#]
	$\frac{3}{4}$	&	(
	$\frac{1}{8}$	*)
	$\frac{3}{8}$	~	/
	$\frac{5}{8}$?	
	$\frac{7}{8}$	¿	\

:	¢	∑	=	÷
;	£	√	+	f
“	\$	∞	-	∂
”	¥	∫	<	ß
‘	%	◇	>	μ
...	§	≤	∞	þ
α	©	≥	≈	Ɔ
«	®	±	≠	
»	™	○	π	





Colophon

Typography specimen designed by
Sharon Su

For Typography I, Fall 2011
at the University of the Pacific

Typeface used: Mrs Eaves

Text by Shel Silverstein, Wikipedia, and
Sharon Su

There are no happy endings,
Endings are the saddest part,
So just give me a happy middle

And a very happy start.